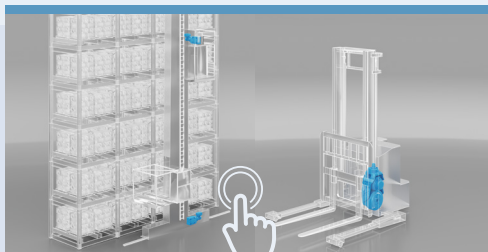
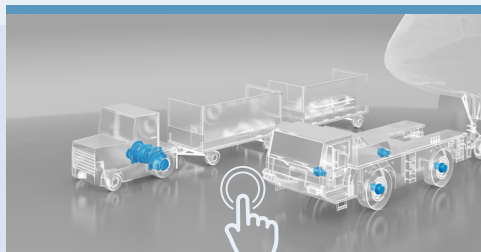


Solutions for

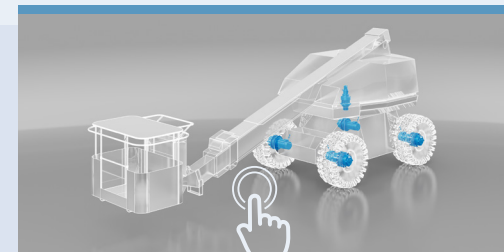
LOGISTICS & INTRALOGISTICS



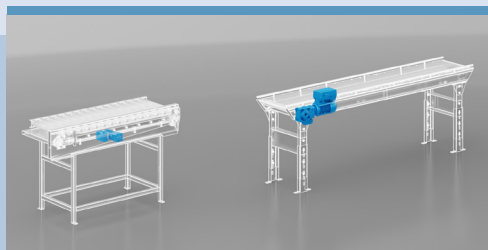
WAREHOUSE & MATERIAL HANDLING



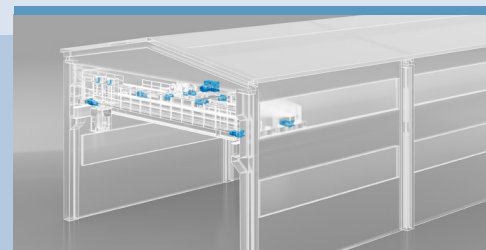
AIRPORT EQUIPMENT



ACCESS & AERIAL PLATFORMS

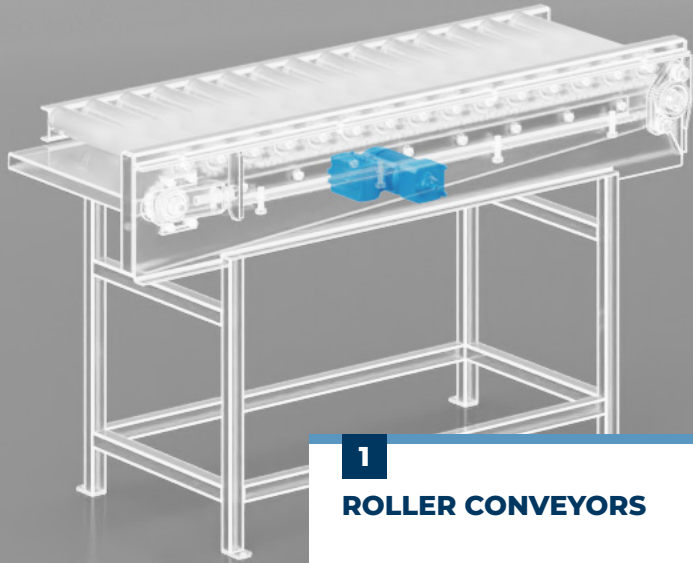


CONVEYING



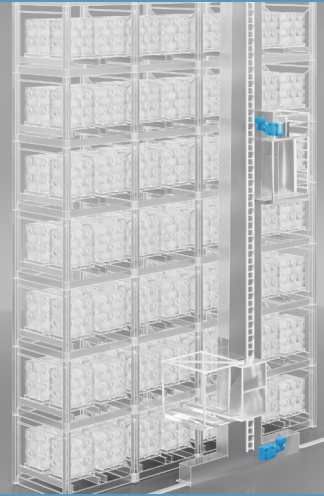
LOGISTIC & INDUSTRIAL CRANES





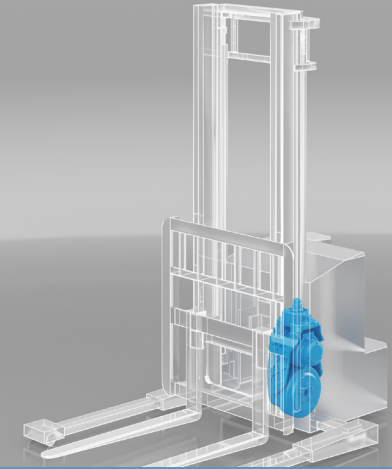
1

ROLLER CONVEYORS



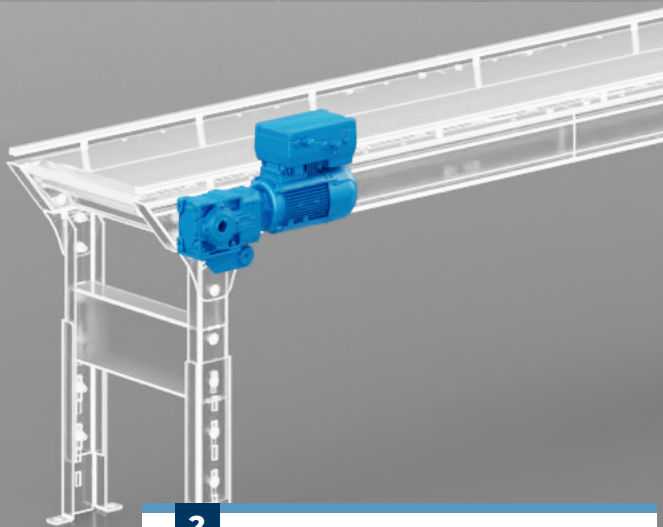
3

AUTOMATIC STORAGE



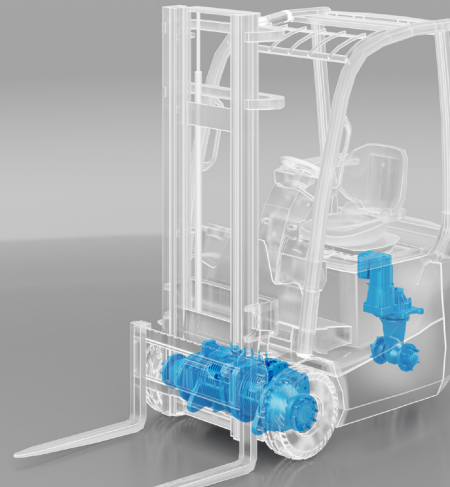
5

WAREHOUSING



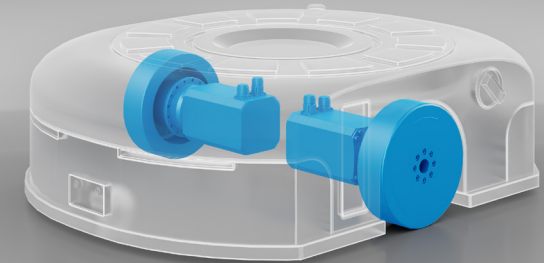
2

BELT CONVEYORS



4

FORKLIFTS



6

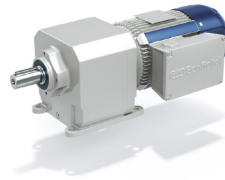
AUTOMATIC GUIDED VEHICLES





1

ROLLER CONVEYORS



EVOX Series

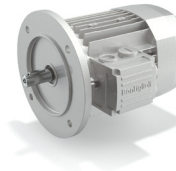
Helical In-Line Gearbox

BENEFITS

- Torque density
- Compact design
- Wide choice of speeds
- Universal mounting position
- Long-life lubricated

FEATURES

- Wide range of bolt-on output flanges
- Motor power from 0.37 to 11 kW
- Reinforced bearings available as an option



BSR Series

Synchronous Reluctance Motors

- Torque density
- Compact design
- Wide choice of speeds
- Universal mounting position

- IE3/IE4 green solution
- High torque level
- Wide range of options and flanges

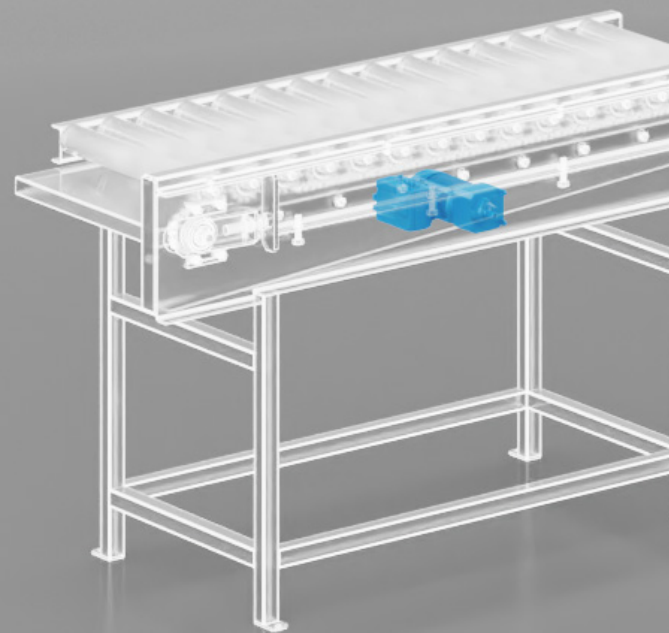


DGM Series

Decentralized Inverter

- Wide range of kW from 0.55 to 30kW
- Ethernet stack to manage with 1 product code: Profinet, Ethernet IP, Sercos3, Ethercat
- Motor brake management

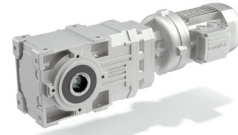
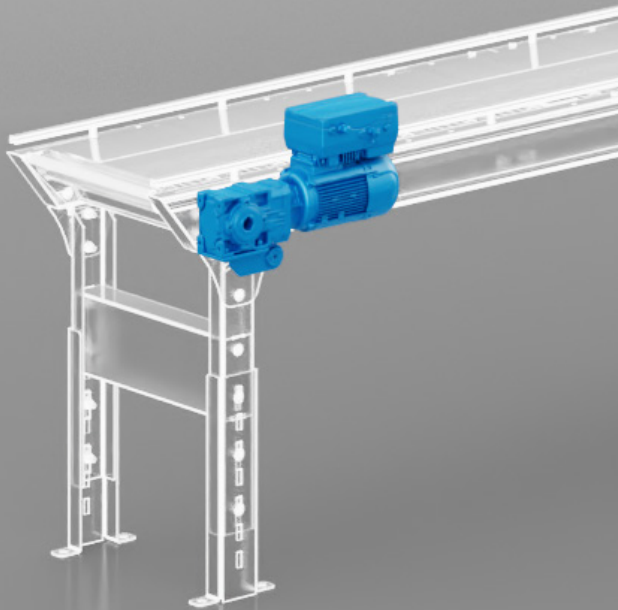
- IP65 Inverter
- Reduction of electrical wiring
- Management of asynchronous motor, reluctance synchronous





2

BELT CONVEYORS



A Series

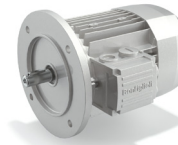
Helical Bevel Gearmotors
& Units

BENEFITS

- Torque density
- Compact design
- Wide choice of speeds

FEATURES

- Shaft mounting with hollow shaft and torque arm or shrink disk
- Horizontal or vertical mounting position
- Motor power from 0.37 to 11 kW
- Reinforced bearings available as an option
- Reduced backlash as an option



BSR Series

Synchronous Reluctance
Motors

- Torque density
- Compact design
- Wide choice of speeds
- Universal mounting position

- IE3/IE4 green solution
- High torque level
- Wide range of options and flanges



DGM Series

Decentralized Inverter

- Wide range of kW from 0.55 to 30kW
- Ethernet stack to manage with 1 product code: Profinet, Ethernet IP, Sercos3, Ethercat
- Motor brake management

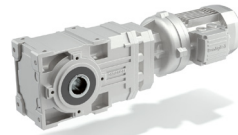
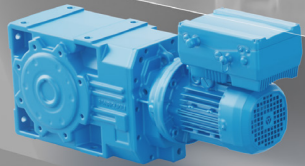
- IP65 Inverter
- Reduction of electrical wiring
- Management of asynchronous motor, reluctance synchronous





3

AUTOMATIC STORAGE



A Series

Helical Bevel Gearmotors
& Units

BENEFITS

- Torque density
- Compact design
- Wide choice of speeds

FEATURES

- Shaft mounting with hollow shaft
- Horizontal or vertical mounting position
- Motor power from 0.25 to 3 kW



MXN Series

Asynchronous Motors

- Compact design
- Wide choice of speeds
- Universal mounting position
- Feedback device (encoder) available as option

- IE3 solution
- Wide range of options and flanges



DGM Series

Decentralized Inverter

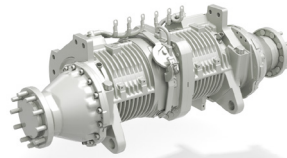
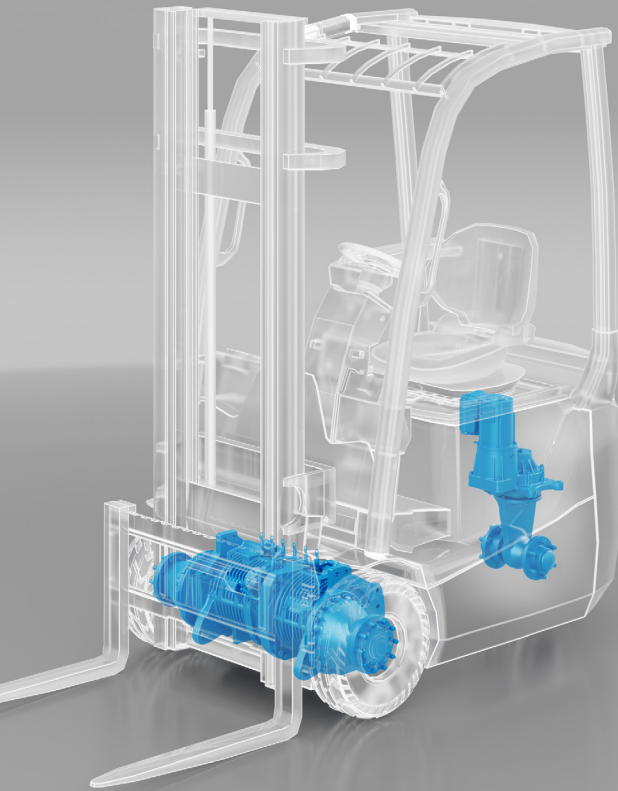
- Wide range of kW from 0.55 to 30kW
- Ethernet stack to manage with 1 product code: Profinet, Ethernet IP, Sercos3, Ethercat
- Motor brake management

- IP65 Inverter
- Reduction of electrical wiring
- Management of asynchronous motor, reluctance synchronous



4

FORKLIFTS



600F Series Traction Systems

BENEFITS

- Maximum efficiency
- Minimum noise
- Complete solution
- Fully tested

FEATURES

- Dual stage gearbox
- Optimized gear design
- Service brake
- Parking brake
- Integrated, customized mast support
- Integrated AC traction motor protection rating up to IP54
- Integrated, high accuracy, silicon-based temperature sensor
- Integrated, high resolution hall effect speed sensor

TECHNICAL DATA

	Axle torque (Nm)	Lift capacity (kg)
601 F	3,000	2,000
602 F	5,500	3,500
603 F	7,000	5,000
605 F	18,000	9,000
610 F	50,000	16,000



600WOC Series Idle Steering System

< BACK 

- 360° steering
- Complete solution
- Fully tested

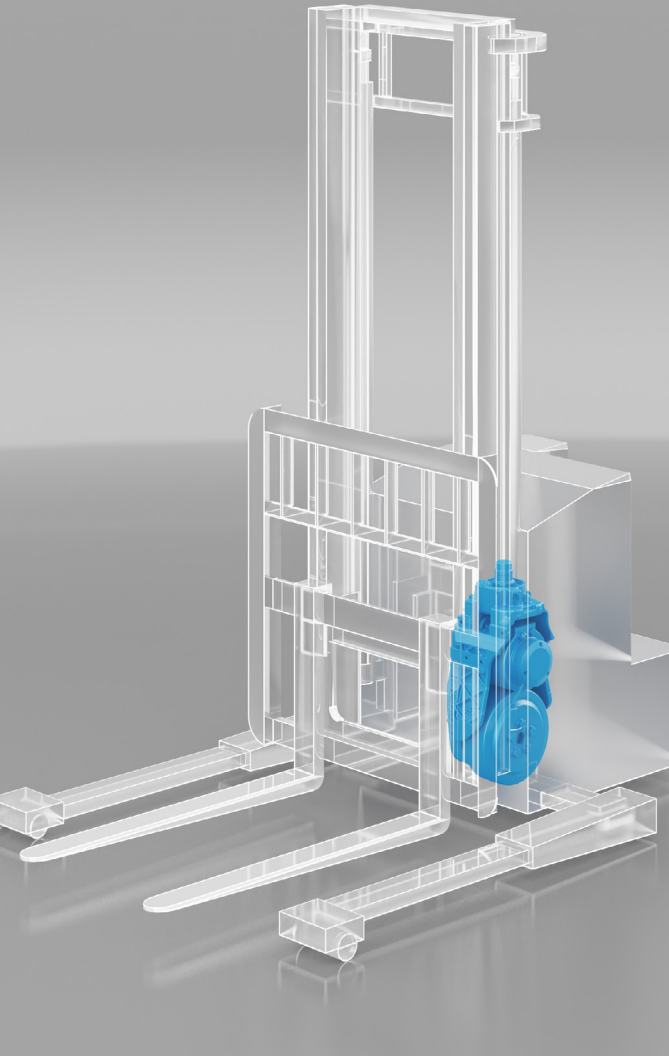
- Hydraulic steering
- Electric steering for 601W0
- Optimized steering angle design

	Lift capacity (kg)
601 W0C	2,000
602 W0C	3,000
603 W0C	3,500



5

WAREHOUSING



EL Series

Steerable Drives

BENEFITS

- Maximum efficiency
- Minimum noise
- Complete solution
- Fully tested

FEATURES

- Two-stage helical & bevel gearboxes
- Manual steering and power steering versions
- Optimized gear design for efficiency and noise
- Integrated low-voltage electric motor
- Integrated parking brake
- Complete system with tires

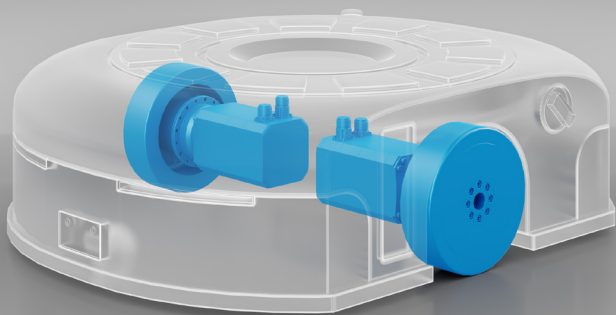
TECHNICAL DATA

	Torque (Nm)	Max wheel load (kg)
EL100	450	1,200
EL09	500	1,200
EL96	500	1,500
EL10	900	1,500
EL300	1,100	2,200
EL92	1,500	3,000
EL93	1,500	3,000
EL94	1,500	3,000
EL14	1,900	3,400
EL16	2,500	4,000

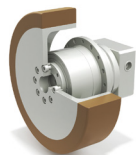


6

AUTOMATIC GUIDED VEHICLES



< BACK 

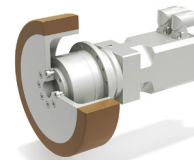


BlueRoll Basic

TQW: the new Wheel-Mounted Gearbox Series

BENEFITS

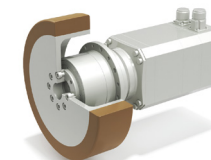
- Easy installation
- Heavy load capability
- Great reliability
- Minimized installation space



BlueRoll Advanced

Powerful and Compact Servo Gearmotors

- High energy efficiency
- Stiff and precise
- High torque capability
- High flexibility



BlueRoll Compact

Extra Compact Servo Gearmotors

- Simplified AGV design
- Suitable for long operation
- Top level configuration

FEATURES

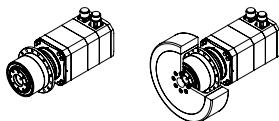
- Three gearmotor sizes, rated for loads up to: 360kg, 720kg and 1020kg
- Speed up to 2 m/s
- New wheel-mounted precision planetary gearbox: TQW
- Permanent Magnet Synchronous Motors with premium efficiency
- Wide range of feedback systems, including safety encoders
- Compact design, extensively customizable

TECHNICAL DATA

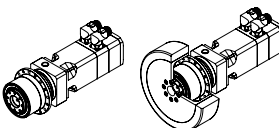
	Torque (Nm)
TQW 060	30
TQW 070	65
TQW 090	155

Customized levels of integration

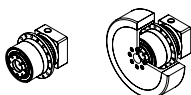
BLUEROLL COMPACT
Extra compact
Servo geared motors



BLUEROLL ADVANCED
Servo geared motors



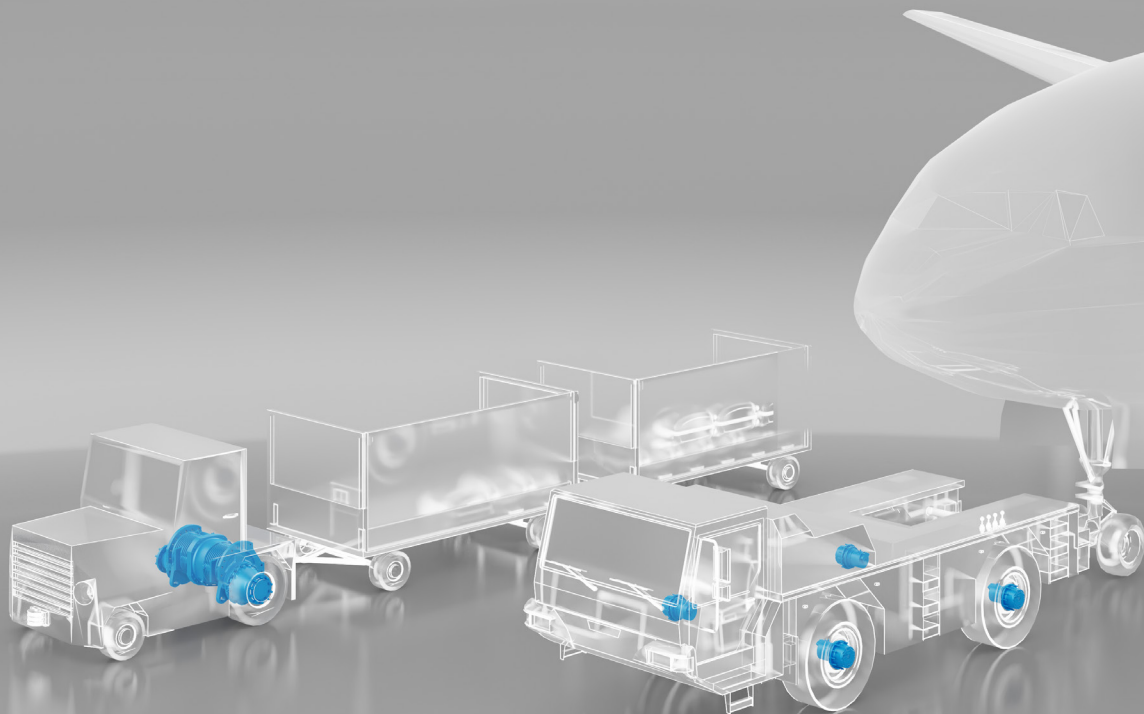
BLUEROLL BASIC
Precision Planetary Gearboxes



Every BlueRoll version is available both with and without the wheel.

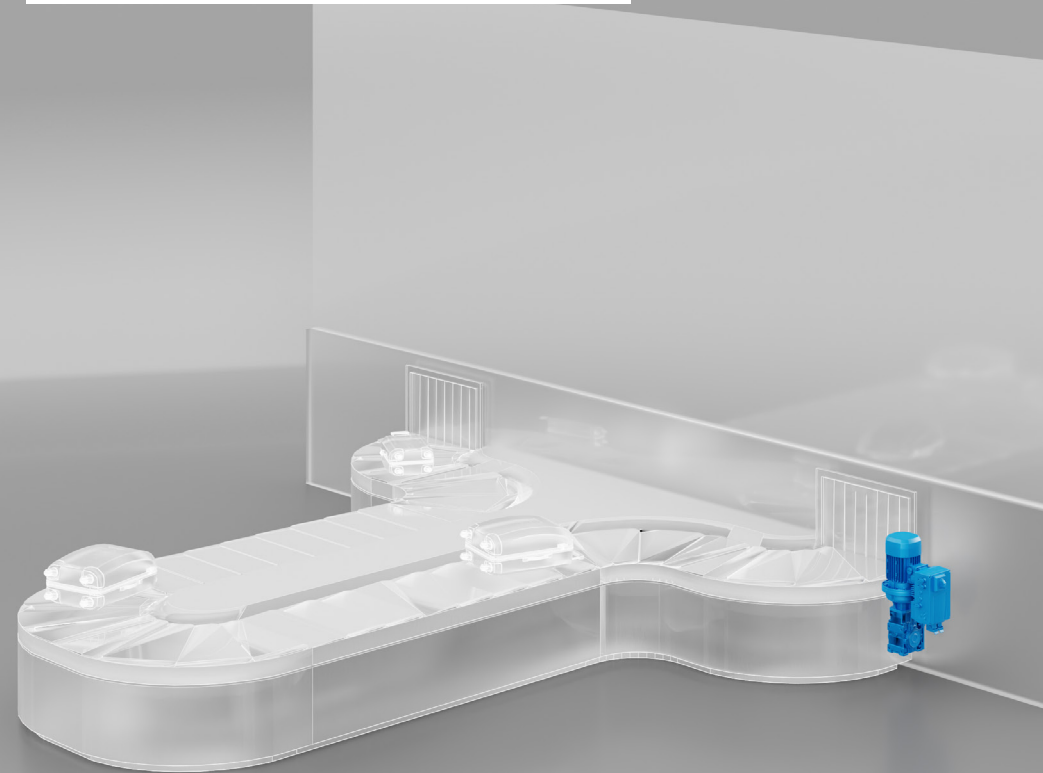
1

TOW TRACTORS



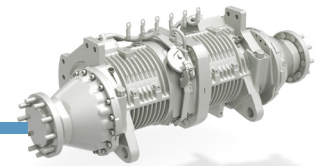
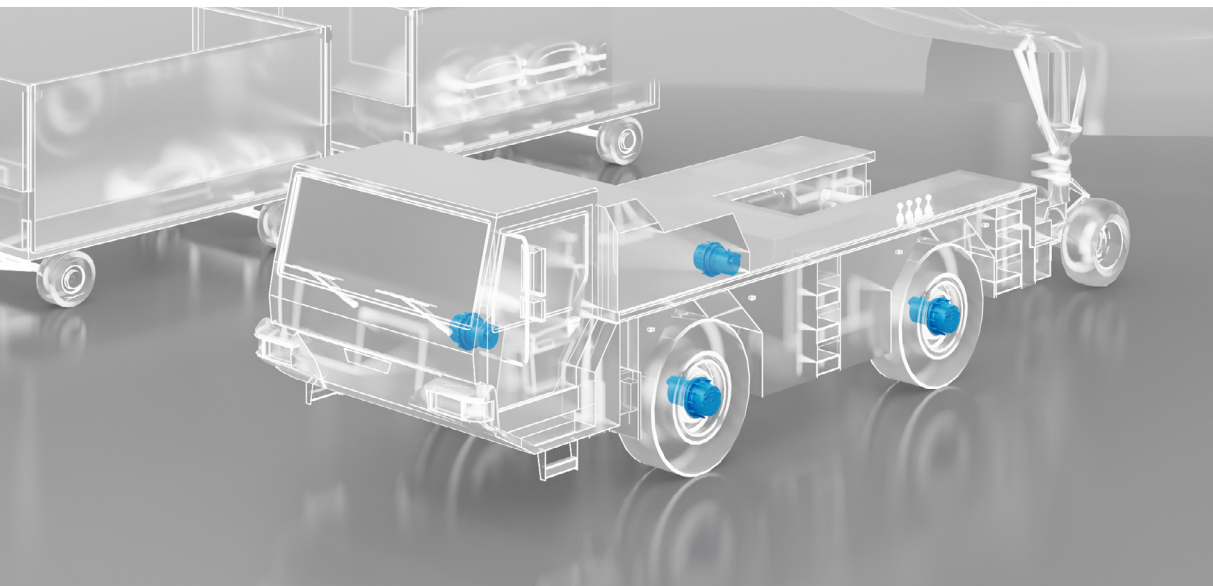
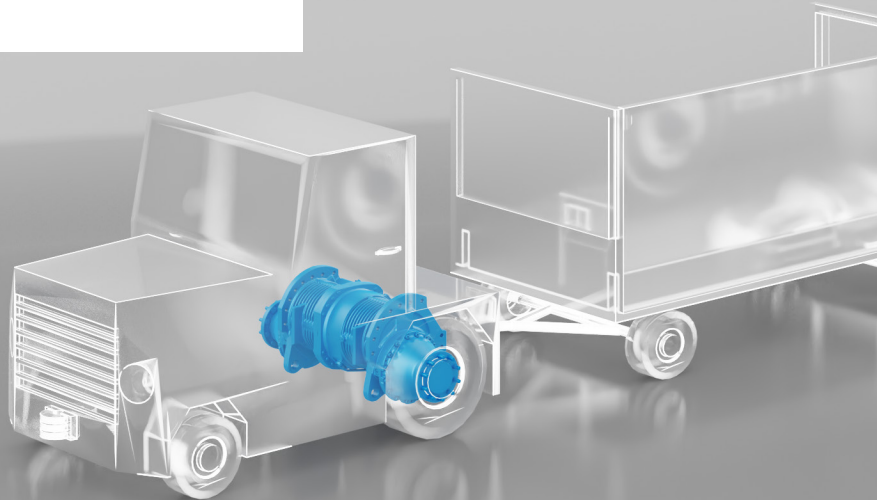
2

BAGGAGE CLAIM

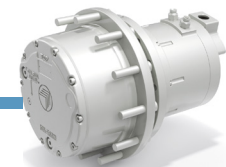


1

TOW TRACTORS



TRACTION SYSTEMS

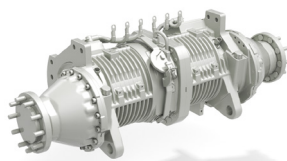


WHEEL DRIVES



1

TOW TRACTORS TRACTION SYSTEMS



600F Series TractionSystems

BENEFITS

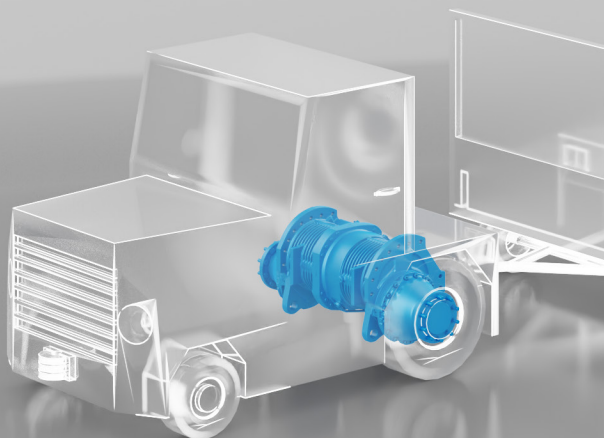
- Maximum efficiency
- Minimum noise
- Complete solution
- Fully tested

FEATURES

- Dual stage gearbox
- Optimized gear design
- Service brake
- Parking brake
- Integrated, customized mast support
- Integrated AC traction motor protection rating up to IP54
- Integrated, high accuracy, silicon-based KTY temperature sensor
- Integrated, high resolution hall effect speed sensor

TECHNICAL DATA

	Torque (Nm)	Max draw bar pull force (kN)
600 D	1,000	5 ... 8
601 F	3,000	9 ... 14
602 F	5,500	15 ... 18
603 F	7,000	20 ... 30



1

TOW TRACTORS WHEEL DRIVES



600W Series

Wheel Drives

BENEFITS

Benefits for OEMs

- Ability to downsize and downspeed combustion engines
- Easy installation: electric solution dimensions comparable to standard hydrostatics
- Higher system reliability: fewer mechanical parts
- Virtually maintenance-free electric motors
- From wheel bolt to electric wire with only one supplier

Benefits for end users

- Reduced fuel consumption
- Increased productivity
- Better machine manoeuvrability
- The electric solution is cleaner: lower risk of oil spills

FEATURES

- Multi-stage planetary gearbox
- Rotating housing output
- Validated in the field

- Permanent magnet motors
- Suitable for batteries 400 - 700Vdc
- Liquid cooled
- Aluminium or cast iron housing
- Protection rating >IP54

TECHNICAL DATA

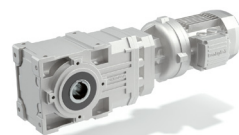
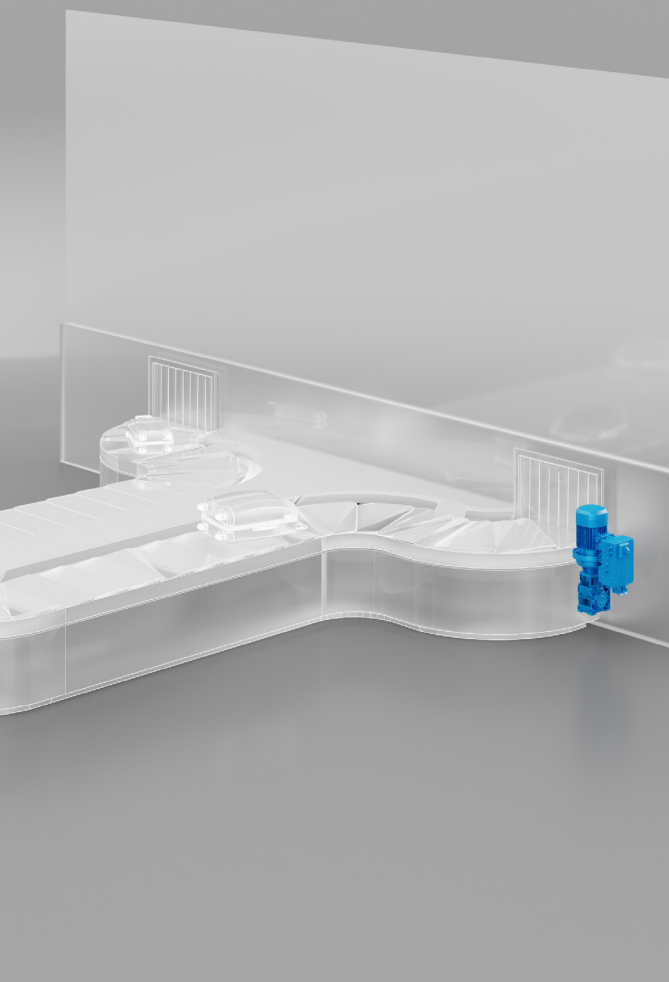
	Torque (Nm)
605 W..V..	10,000
606 W..V	17,000
607 W..V	22,000
609 W..V	30,000
610 W..V	36,000
610 X	40,000
611 W..V	45,000
613 W..V	60,000

	Rated power (kW)
BTM 240-L1	20
BTM 240-L2	35
BTM 240-L3	65
BTM 300-L1	100
BTM 300-L2	150



2

BAGGAGE CLAIM

**A Series**

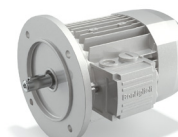
Helical Bevel Gearmotors & Units

BENEFITS

- Torque density
- Compact design
- Wide choice of speeds

FEATURES

- Shaft mounting with hollow shaft and torque arm or shrink disk
- Horizontal or vertical mounting position
- Motor power from 0.37 to 11 kW
- Reinforced bearings available as an option
- Reduced backlash as an option

**BSR Series**

Synchronous Reluctance Motors

- Torque density
- Compact design
- Wide choice of speeds
- Universal mounting position

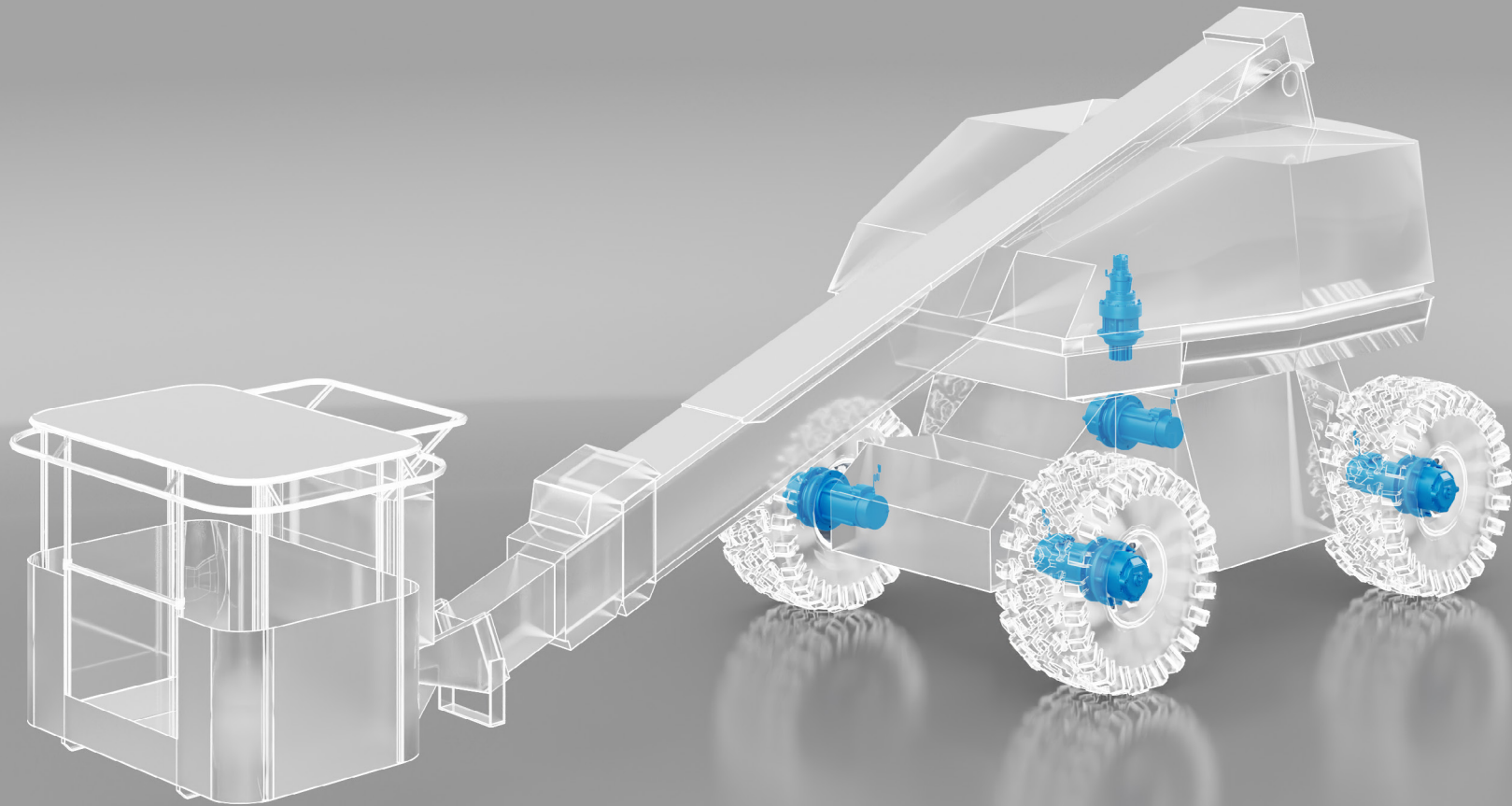
- IE3/IE4 green solution
- High torque level
- Wide range of options and flanges

**DGM Series**

Decentralized Inverter

- Wide range of kW from 0.55 to 30kW
- Ethernet stack to manage with 1 product code: Profinet, Ethernet IP, Sercos3, Ethercat
- Motor brake management

- IP65 Inverter
- Reduction of electrical wiring
- Management of asynchronous motor, reluctance synchronous



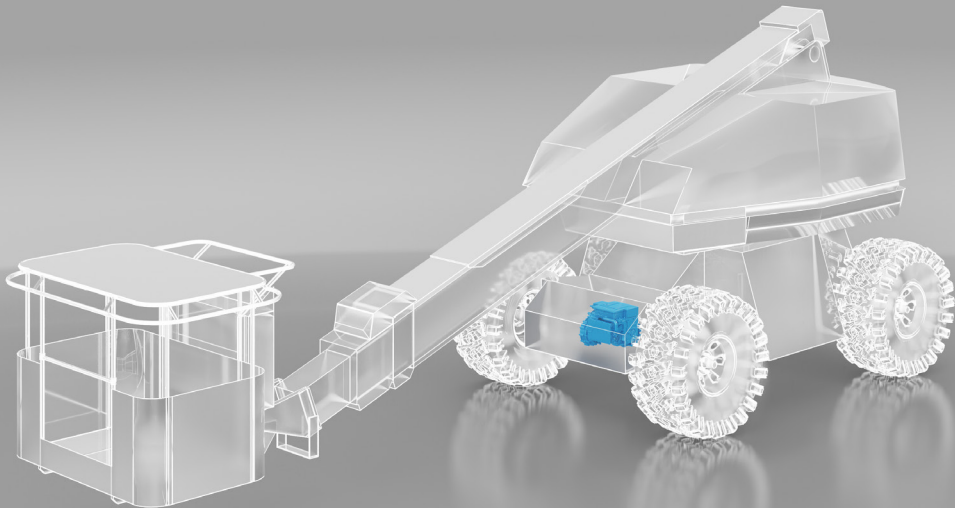
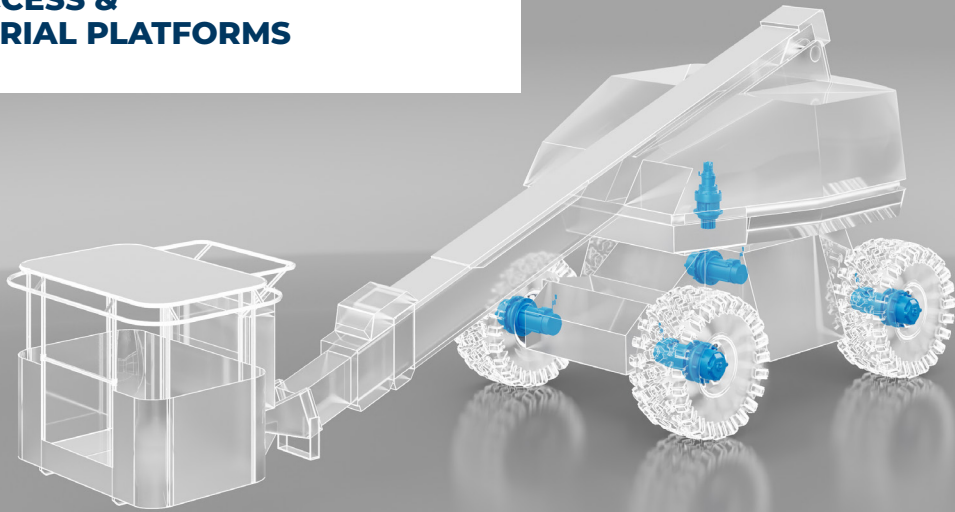
1

**ACCESS &
AERIAL PLATFORMS**

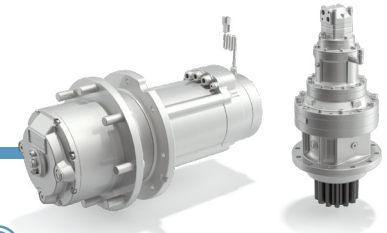


1

ACCESS & AERIAL PLATFORMS



WHEEL & SLEW DRIVES

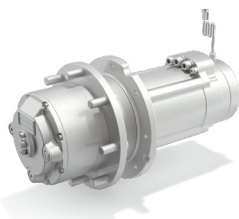
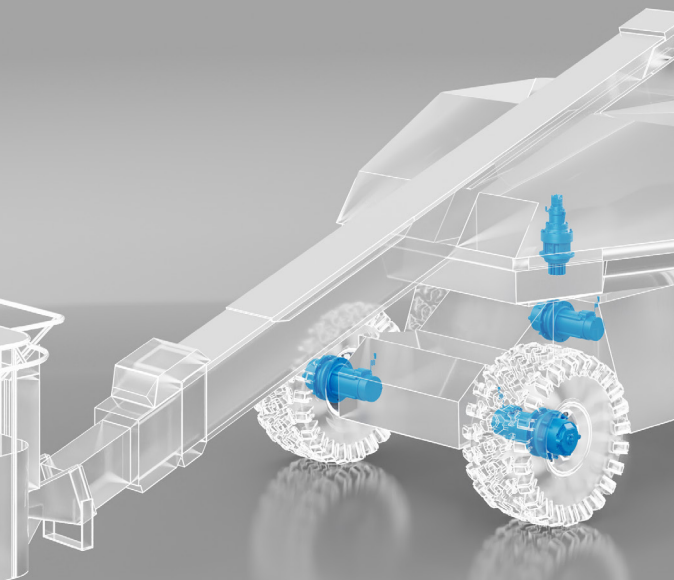


ELECTRIC DRIVE SYSTEM



1

ACCESS & AERIAL PLATFORMS WHEEL & SLEW DRIVES



600WE Series

Wheel Drives

BENEFITS

- Compact dimensions
- Low noise
- High efficiency
- Maintenance-free motors

FEATURES

- Two- or three-stage planetary drive with reduction ratios of up to 1:145
- Optimized gear design for maximum efficiency and minimum noise
- Integrated, low voltage, 3-phase induction motor
- Integrated, high accuracy, temperature sensor
- High resolution, hall-effect speed sensor
- Motor protection rating up to IP67

TECHNICAL DATA

	Torque (Nm)
600 WL	500
600 WE	900
601 RE	3,000
602 RE	3,500
602 WE	4,500
604 WE	7,000
605 WE	10,000



700T Series

Slew Drives

- Rugged construction
- Flange mounted
- High torque capacity

- Driven by hydraulic or electric motor
- Output shaft with pinion
- Compact design
- Wide range of pinions
- Including brake, wet disc or electromagnetic

	Torque (Nm)
700 T F	1,200
701 T F	2,400
703 T F	3,500
705 T F	6,500



1

ACCESS & AERIAL PLATFORMS ELECTRIC DRIVE SYSTEM



E-AXLES Series

Electric Drive System

BENEFITS

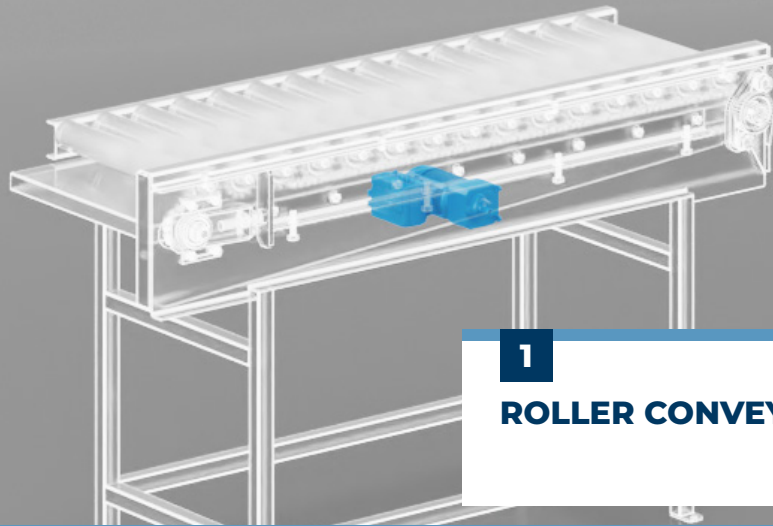
- Compact
- High power density & efficiency
- Modular
- Easy installation
- Reduced time-to-market
- Reduced EV knowledge and vehicle modifications
- ~80% less weight and volume compared to traditional internal combustion engines

FEATURES

- E-AXLES series can be configured as:
 - TransAxle - with/without gearbox
 - CentrAxle - with/without gearbox
- Telematics control board available as system option
- System efficiency reaches 93%
- Scalable power from 90kW to 120kW peak
- Permanent magnet synchronous motor technology
- Adaptable to various applications adding a powertrain control unit
- Available with inverter in Slave or Master configuration, with torque and speed control functions

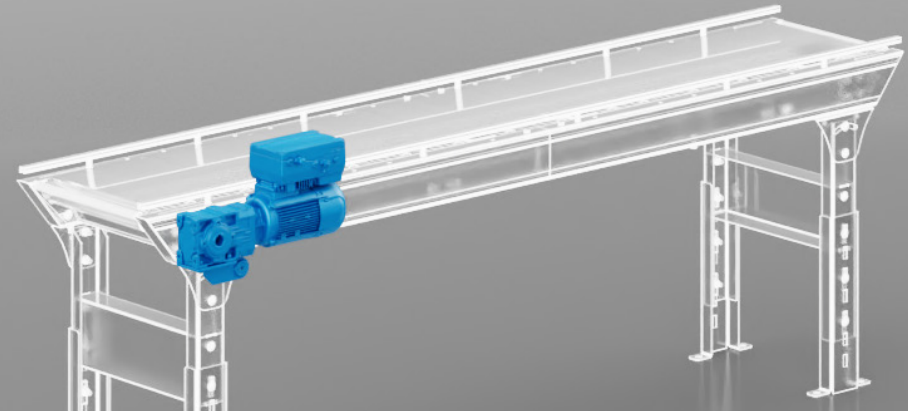
TECHNICAL DATA

		TransAxle & CentrAxle (with gearbox)		TransAxle & CentrAxle (without gearbox)	
		90kW	120kW	90kW	120kW
Torque range	(Nm)	728	728	260	260
Speed transmission with gear ratio	i:	2.8	2.8	-	-
Motor max output speed	(rpm)	3,928	3,928	11,000	11,000



1

ROLLER CONVEYORS

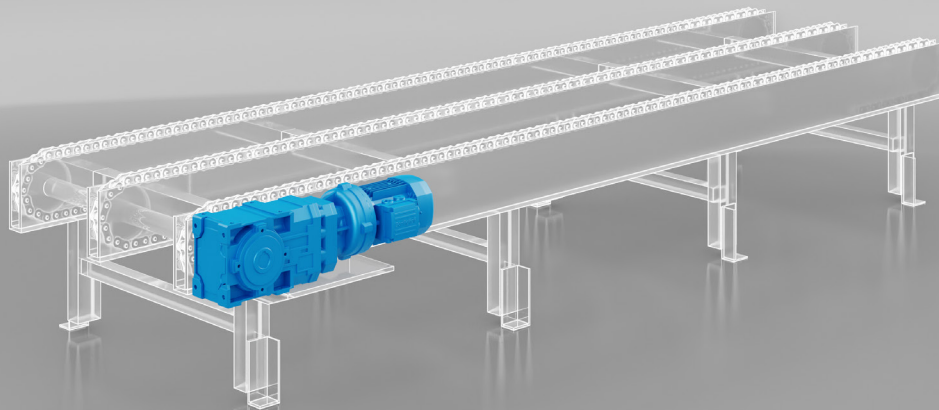


2

BELT CONVEYORS

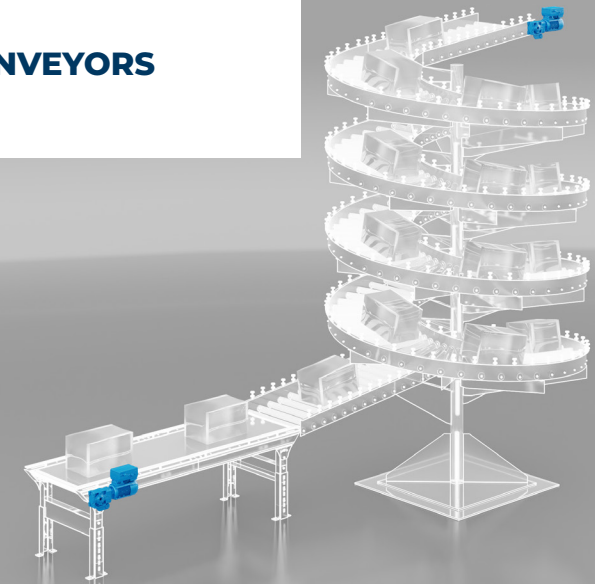
3

CHAIN CONVEYORS



4

SPIRAL CONVEYORS





1

ROLLER CONVEYORS



EVOX Series

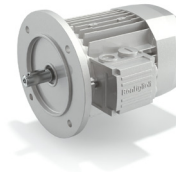
Helical In-Line Gearbox

BENEFITS

- Torque density
- Compact design
- Wide choice of speeds
- Universal mounting position
- Long-life lubricated

FEATURES

- Wide range of bolt-on output flanges
- Motor power from 0.37 to 11 kW
- Reinforced bearings available as an option



BSR Series

Synchronous Reluctance Motors

- Torque density
- Compact design
- Wide choice of speeds
- Universal mounting position

- IE3/IE4 green solution
- High torque level
- Wide range of options and flanges

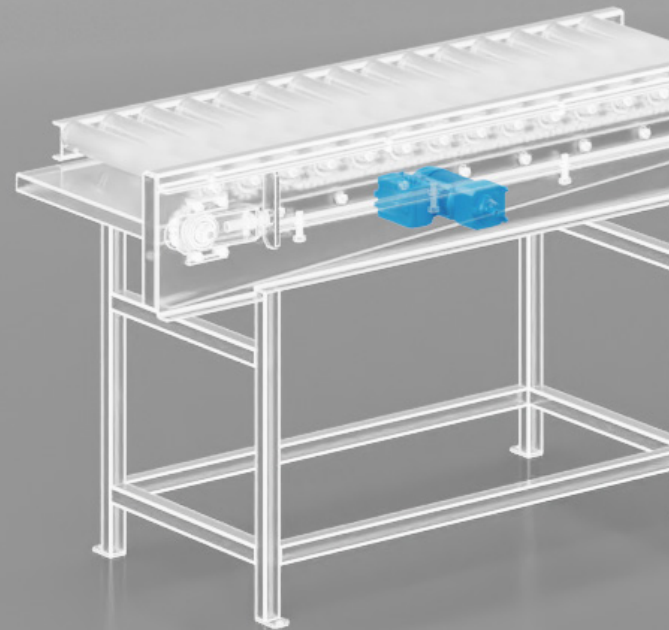


DGM Series

Decentralized Inverter

- Wide range of kW from 0.55 to 30kW
- Ethernet stack to manage with 1 product code: Profinet, Ethernet IP, Sercos3, Ethercat
- Motor brake management

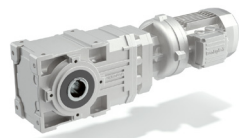
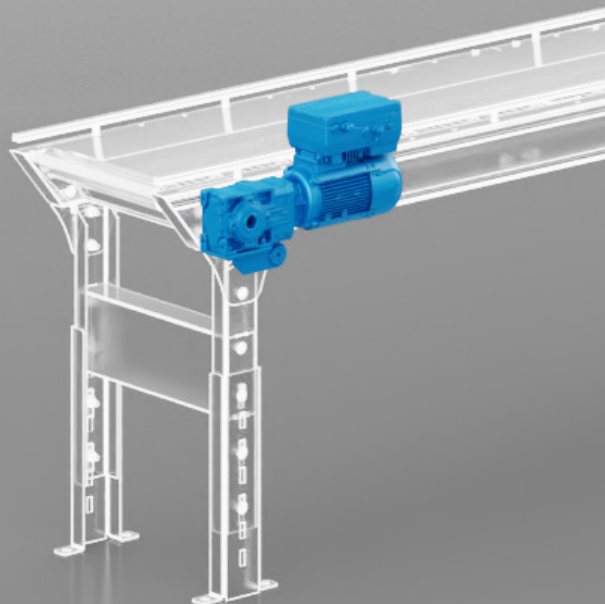
- IP65 Inverter
- Reduction of electrical wiring
- Management of asynchronous motor, reluctance synchronous





2

BELT CONVEYORS



A Series

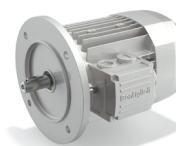
Helical Bevel Gearmotors
& Units

BENEFITS

- Torque density
- Compact design
- Wide choice of speeds

FEATURES

- Shaft mounting with hollow shaft and torque arm or shrink disk
- Horizontal or vertical mounting position
- Motor power from 0.37 to 11 kW
- Reinforced bearings available as an option
- Reduced backlash as an option



BSR Series

Synchronous Reluctance
Motors

- Torque density
- Compact design
- Wide choice of speeds
- Universal mounting position

- IE3/IE4 green solution
- High torque level
- Wide range of options and flanges



DGM Series

Decentralized Inverter

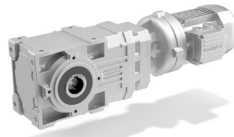
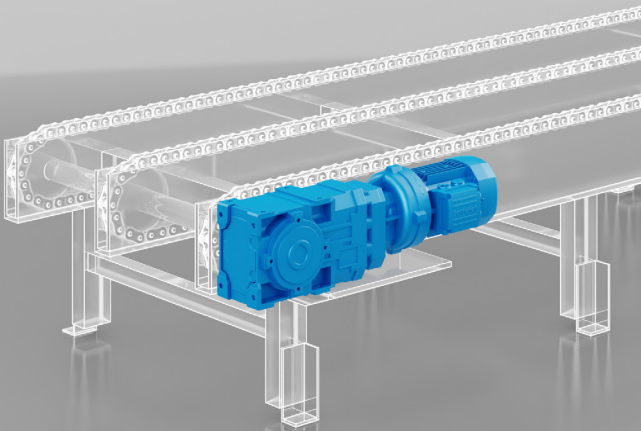
- Wide range of kW from 0.55 to 30kW
- Ethernet stack to manage with 1 product code: Profinet, Ethernet IP, Sercos3, Ethercat
- Motor brake management

- IP65 Inverter
- Reduction of electrical wiring
- Management of asynchronous motor, reluctance synchronous



3

CHAIN CONVEYORS

**A Series**

Helical In-Line Gearbox and Geared Motor

BENEFITS

- Torque density
- Compact design
- Wide choice of speeds

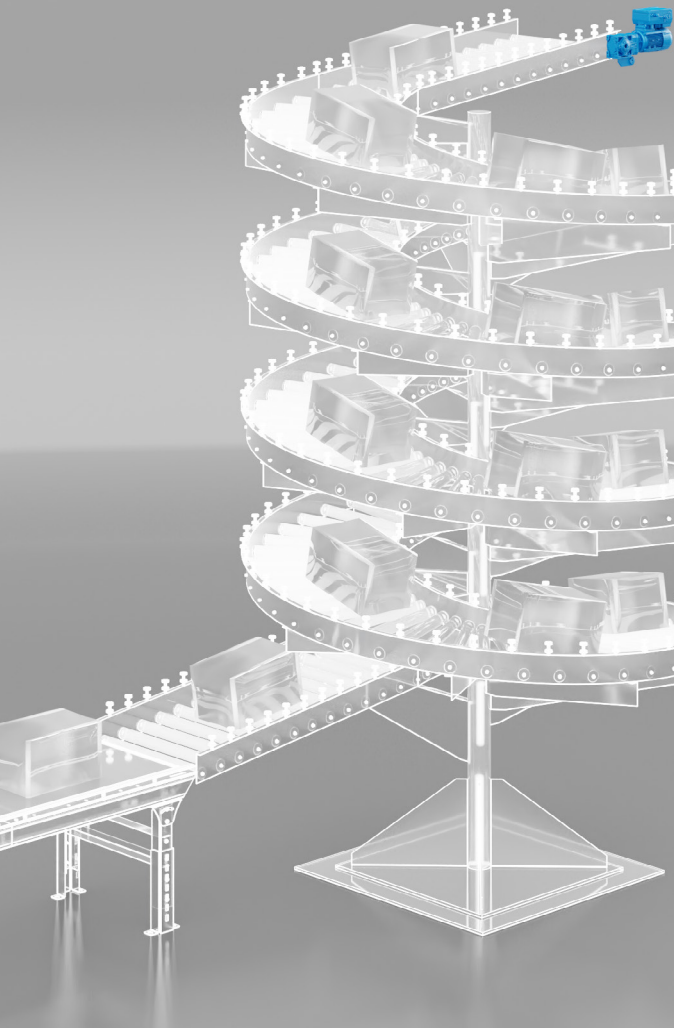
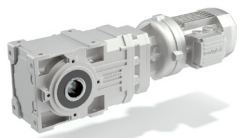
FEATURES

- Shaft mounting with hollow shaft and torque arm or shrink disk
- Horizontal or vertical mounting position
- Motor power from 0.37 to 11 kW
- Reinforced bearings available as an option
- Reduced backlash as an option



4

SPIRAL CONVEYORS


[!\[\]\(5a132f13505a6571904d622757b7a8f0_img.jpg\)
 < BACK](#)
**A Series**

Helical Bevel Gearmotors
& Units

BENEFITS

- Torque density
- Compact design
- Wide choice of speeds

FEATURES

- Shaft mounting with hollow shaft
- Horizontal or vertical mounting position
- Motor power from 0.25 to 3 kW

**MXN Series**

Asynchronous Motors

- Compact design
- Wide choice of speeds
- Universal mounting position
- Feedback device (encoder) available as option

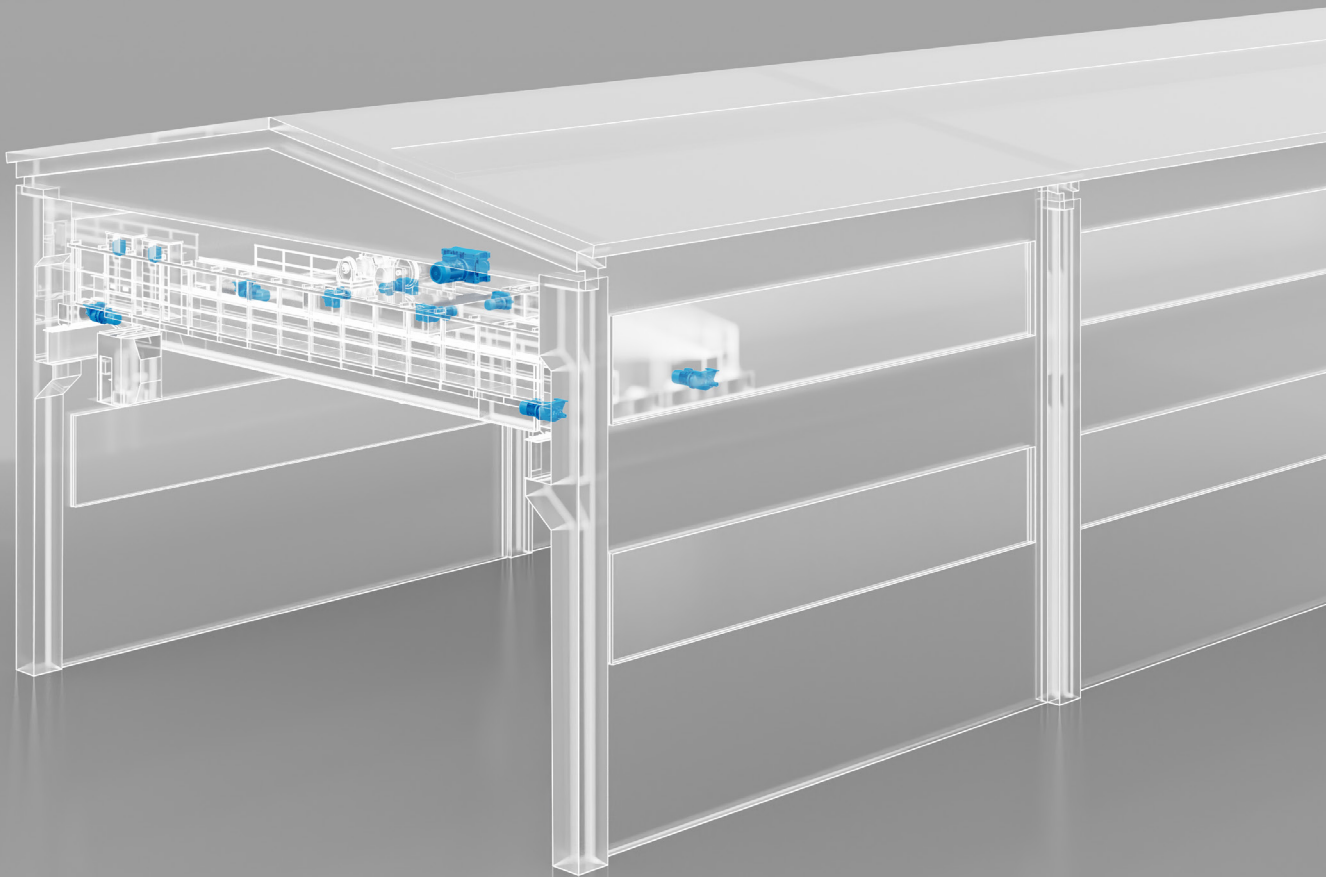
- IE3 solution
- Wide range of options and flanges

**DGM Series**

Decentralized Inverter

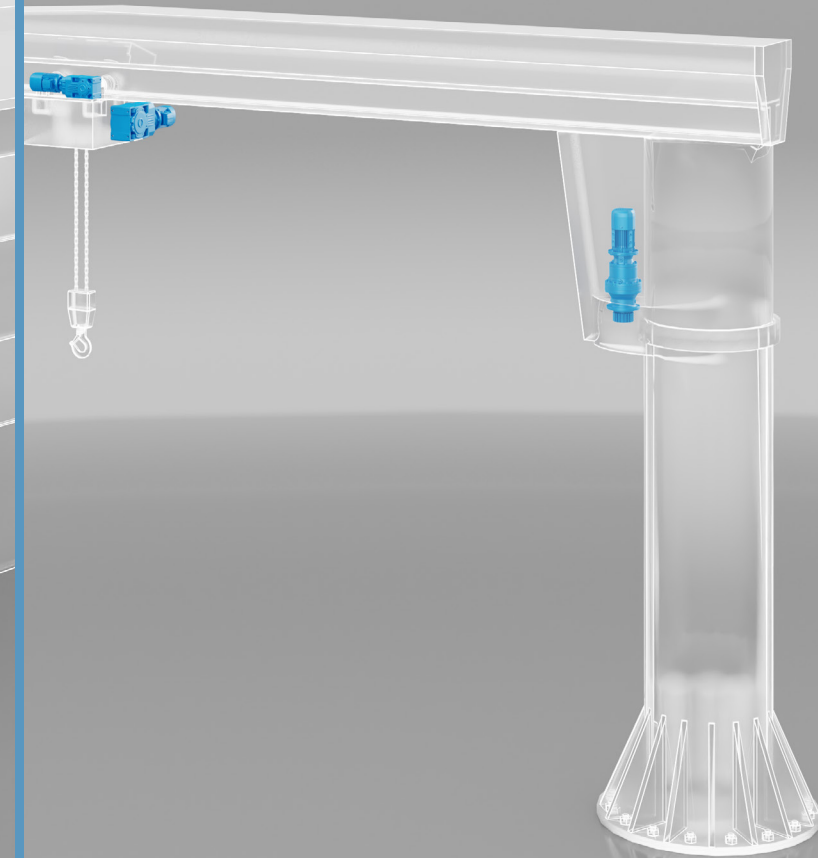
- Wide range of kW from 0.55 to 30kW
- Ethernet stack to manage with 1 product code: Profinet, Ethernet IP, Sercos3, Ethercat
- Motor brake management

- IP65 Inverter
- Reduction of electrical wiring
- Management of asynchronous motor, reluctance synchronous



1

OVERHEAD CRANES



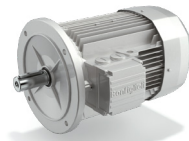
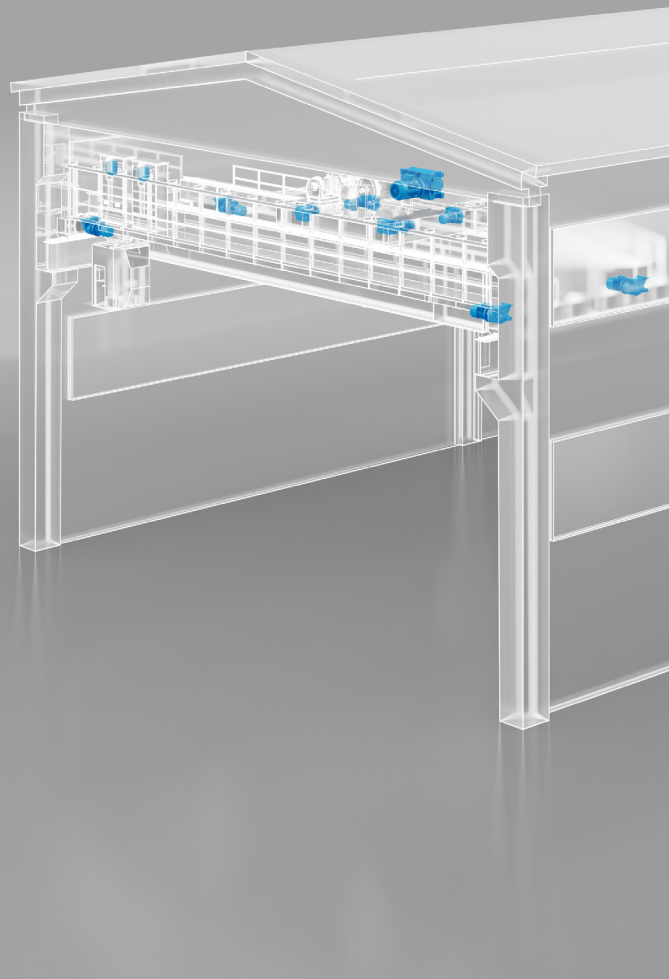
2

JIB CRANES



1

OVERHEAD CRANES

**BX Series**Asynchronous IE3
Three Phase Motor

BENEFITS

- Motor efficiency class up to IE3
- Reliable, balanced and robust
- Complete solution (gear unit + Motor)
- Energy saving solution
- Compliant with the most of the efficiency standards

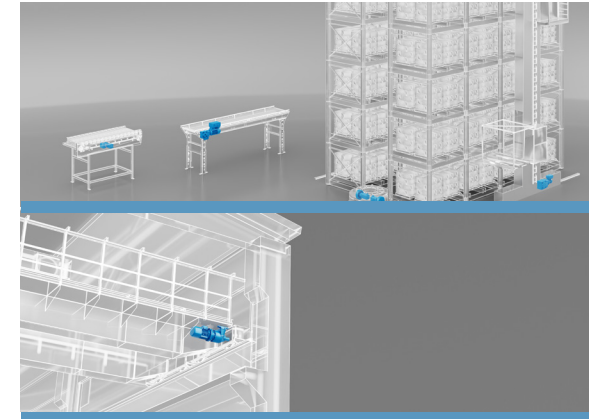
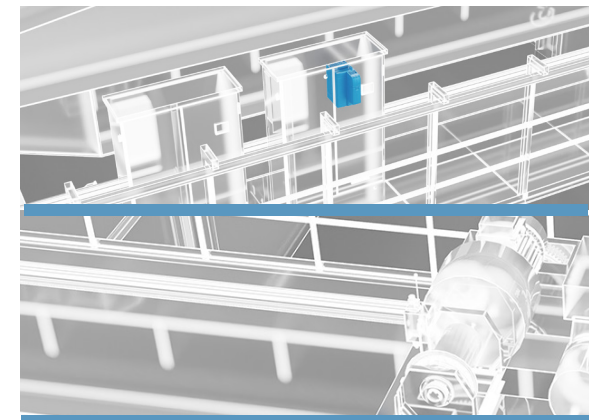
FEATURES

- Power range: up to 355 kW
- Built in brakes available for all power/sizes
- Thermal protection: KTY, PTC, bimetal switches
- Forced ventilation
- Anti-condensate heaters
- Rotor balancing
- Second shaft extension
- Anti corrosive paintings up to C5M
- Tropicalization
- Degree of protection up to IP56

**BX HD Series**Asynchronous IE3
Three Phase motor

- Robustness
- Long lifetime
- Wide power range
- Energy saving
- Compliant to all the MEPS
- Complete solution (gear unit + motor)
- Control flexibility
- Global motor that can be used in most of the markets

- Standard IP55 also for brakemotors
- Cast iron housing
- Inverter duty ready
- SPM measurement
- Certified motor (DOE, NRCAN, CCC...)

**MOTION CONTROL & HOIST DRIVE****CROSS TRAVEL DRIVE & LONG TRAVEL DRIVE**

1

OVERHEAD CRANES

MOTION CONTROL

HOIST DRIVE



Active Cube & AEC Series

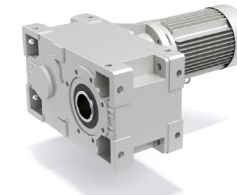
Premium Frequency Inverters and Regenerative Units

BENEFITS

- Drive control highly customizable
- Great operational safety
- Higher productivity
- Increased service life of the crane
- Easy installation
- Lower total cost of ownership

FEATURES

- Power Range: 0.37...1200 kW
- Open & closed loop field oriented control
- Master/Slave control and communication protocols
- PLC with integrated functionalities
- Coated boards
- STO Functional Safety
- Multi drive synchronisation and torque control
- Advanced brake control
- Brake chopper
- DC link connection for energy sharing
- Energy recovery braking (recovered electricity can be sent back to the grid)
- Energy consumption optimization (AEC/B)
- Mains unit (AEC/S)



HDP Series

Heavy Duty Geared Motor (Helical-Parallel)

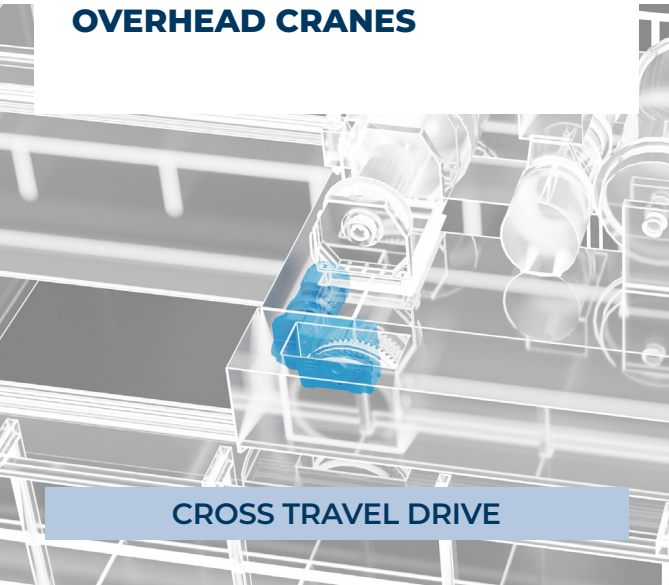
- Robustness
- Reliability in harsh working conditions and wide range of temperature
- Space effective U-shape arrangement
- High overhung load capacity
- Tailored service and warranty plans
- Pre-sales and product definition support according to the material handling and lifting standards

- Double input and output shaft
- Wide range of ratios
- Transmissible torque up to 210.000 Nm
- IEC or NEMA motor flange
- Safety solutions according to the customer requirements
- Wide range of motion control solutions
- Availability of different grade of protection

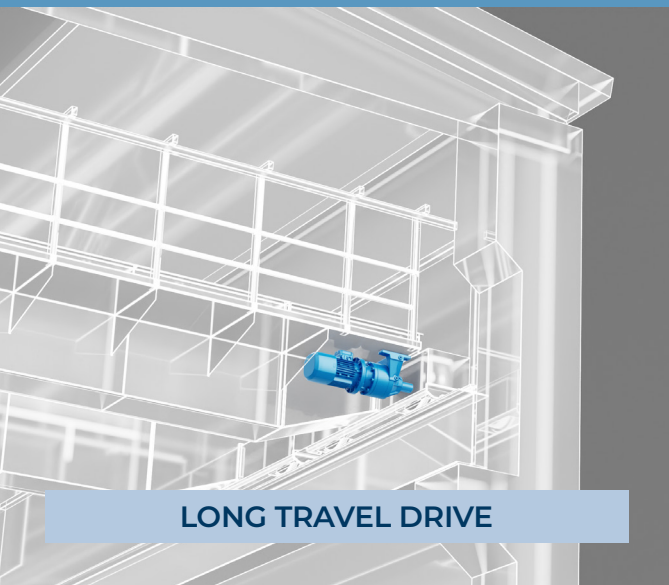


1

OVERHEAD CRANES



CROSS TRAVEL DRIVE



LONG TRAVEL DRIVE



F Series Shaft Mounted Gearbox

BENEFITS

- High efficiency
- Reliability and robustness
- Compactness
- Low maintenance

FEATURES

- Power range: up to 55 kW
- Shaft mounted solution with different output configurations
- Housing integrated torque arm design and anti-vibration kits
- Wide range of ratios
- Space-saving compact motor design
- Availability of different grade of protection
- Compact or IEC/NEMA flanged motor adaptors



300M Series Planetary Geared Motor

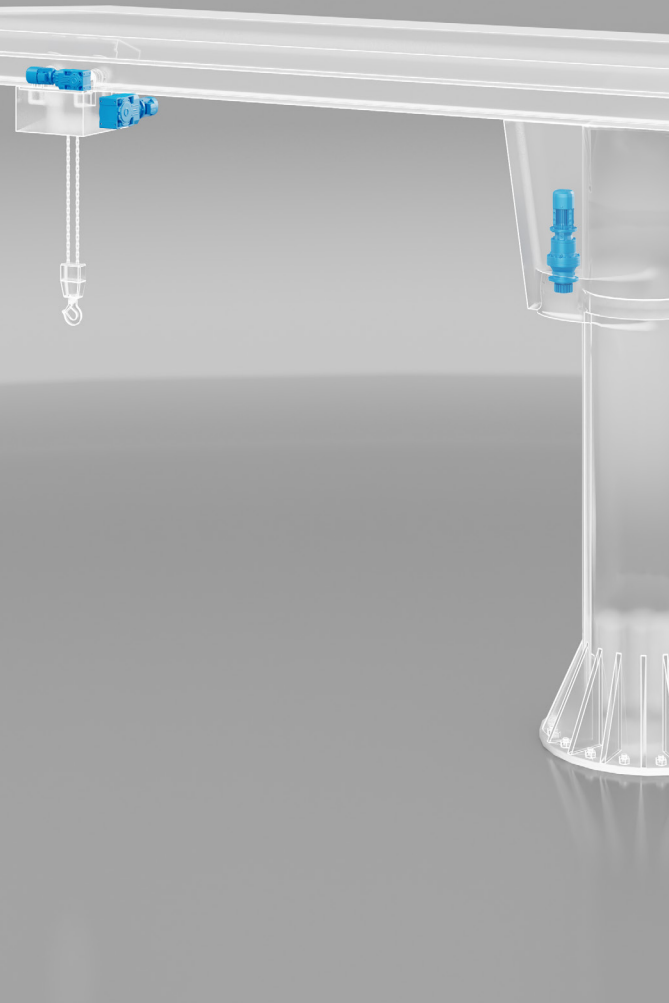
- Robustness
- Reliability in harsh working conditions & wide range of temperature
- High torque density
- Modularity
- High overhung load capacity

- Widest range of ratios
- Easy to fit output pinion
- IEC or NEMA motor flange
- Wide range of motion control solutions
- Availability of different grades of protection



2

JIB CRANES

**BX Series**Asynchronous IE3
Three Phase Motor**BENEFITS**

- Motor efficiency class up to IE3
- Reliable, balanced and robust
- Complete solution (gear unit + Motor)
- Energy saving solution
- Compliant with the most of the efficiency standards

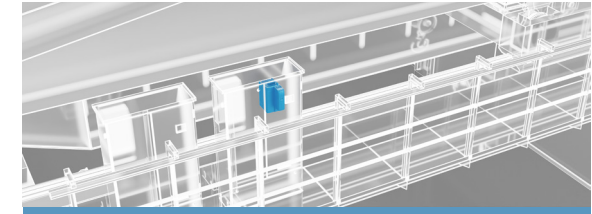
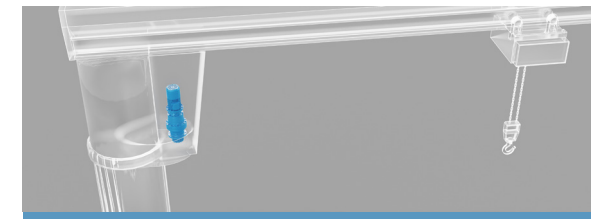
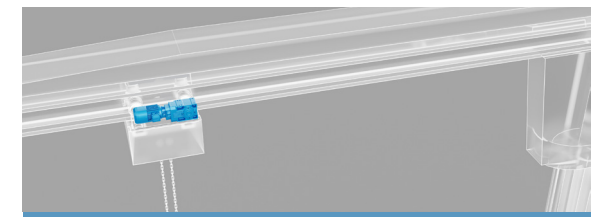
FEATURES

- Power range: up to 355 kW
- Built in brakes available for all power/sizes
- Thermal protection: KTY, PTC, bimetal switches
- Forced ventilation
- Anti-condensate heaters
- Rotor balancing
- Second shaft extension
- Anti corrosive paintings up to C5M
- Tropicalization
- Degree of protection up to IP56

**BX HD Series**Asynchronous IE3
Three Phase motor

- Robustness
- Long lifetime
- Wide power range
- Energy saving
- Compliant to all the MEPS
- Complete solution (gear unit + motor)
- Control flexibility
- Global motor that can be used in most of the markets

- Standard IP55 also for brakemotors
- Cast iron housing
- Inverter duty ready
- SPM measurement
- Certified motor (DOE, NRCAN, CCC...)

[< BACK](#)
**MOTION CONTROL****SLEWING DRIVE****TRAVEL DRIVE
& HOIST DRIVE**

MOTION CONTROL

SLEWING DRIVE

S



Active Cube & AEC Series

Premium Frequency Inverters and Regenerative Units

BENEFITS

- Drive control highly customizable
- Great operational safety
- Higher productivity
- Increased service life of the crane
- Easy installation
- Lower total cost of ownership

FEATURES

- Power Range: 0.37...1200 kW
- Open & closed loop field oriented control
- Master/Slave control and communication protocols
- PLC with integrated functionalities
- Coated boards
- STO Functional Safety
- Multi drive synchronisation and torque control
- Advanced brake control
- Brake chopper
- DC link connection for energy sharing
- Energy recovery braking (recovered electricity can be sent back to the grid)
- Energy consumption optimization (AEC/B)
- Mains unit (AEC/S)



300M Series

Planetary Geared Motor

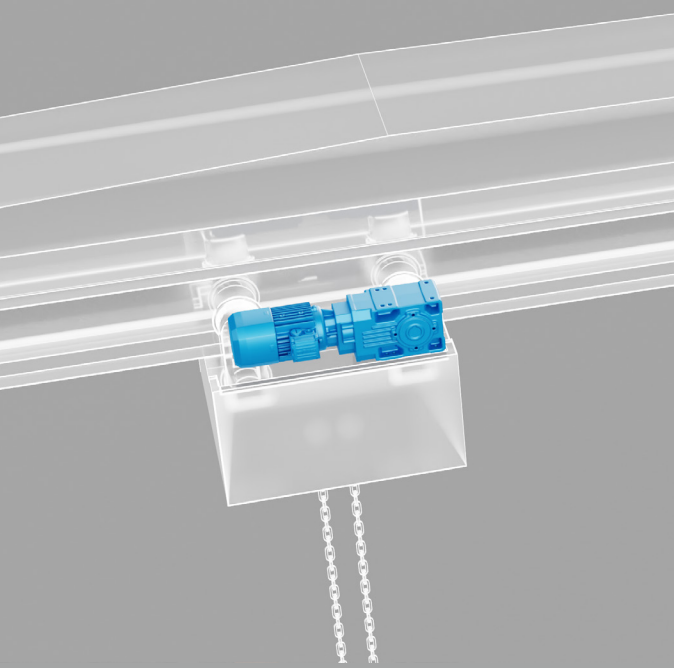
- Robustness
- Reliability in harsh working conditions and wide range of temperature
- High torque density
- Modularity
- High overhung load capacity

- Widest range of ratios
- Easy to fit output pinion
- IEC or NEMA motor flange
- Wide range of motion control solutions
- Availability of different grades of protection

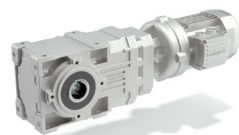


2

JIB CRANES



TRAVEL DRIVE & HOIST DRIVE

**A Series**

Helical Bevel Geared Motor

BENEFITS

- High efficiency
- Reliability and robustness
- Compactness
- Low maintenance
- Space effective & compactness with right angle arrangement

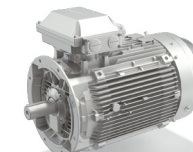
FEATURES

- Power range: up to 55 kW
- Shaft mounted solution with different output configurations
- Torque arm and anti-vibration kits
- Wide range of ratios
- Space-saving compact motor design
- Compact or IEC/NEMA Flanged motor adaptors
- Availability of different grades of protection

**BX Series**Asynchronous IE3
Three Phase Motor

- Motor efficiency class up to IE3
- Reliable, balanced and robust
- Complete solution (gear unit + Motor)
- Energy saving solution
- Compliant with the most of the efficiency standards

- Power range: up to 355 kW
- Built in brakes available for all power/sizes
- Thermal protection: KTY, PTC, bimetal switches
- Forced ventilation
- Anti-condensate heaters
- Rotor balancing
- Second shaft extension
- Anti corrosive paintings up to C5M
- Tropicalization
- Degree of protection up to IP56

**BX HD Series**Asynchronous IE3
Three Phase motor

- Robustness
- Long lifetime
- Wide power range
- Energy saving
- Compliant to all the MEPS
- Complete solution (gear unit + motor)
- Control flexibility
- Global motor that can be used in most of the markets

- Standard IP55 also for brakemotors
- Cast iron housing
- Inverter duty ready
- SPM measurement
- Certified motor (DOE, NRCAN, CCC...)